

SubConn® Circular Right Angle

6, 8 and 10 contacts

Connector specifications

Voltage rating	600 V DC/AC rms
Current rating	10 A per contact (max 50 A per connector)
Insulation resistance	> 200 Mohm
Contact resistance	< 0.01 ohm
Wet matings	> 500
Temperature rating (water)	- 4 to 60°C, 25 to 140°F
Temperature rating (air)	- 40 to 60°C, - 40 to 140°F
Storage temperature rating	- 40 to 60°C, - 40 to 140°F
Design depth rating	1,400 bar, 20,000 psi
Qualified pressure tested	800 bar, 11,600 psi

Material specifications

Connector body	Chloroprene rubber
Contacts	Brass UNS - C36000
Location pin	AISI 303
Locking sleeves	POM or stainless steel
Snap rings	AISI 302
6 and 8 conductor inline cable (2 ft, 60 cm)	16 AWG, 1.31 mm ² chloroprene rubber
10 conductor inline cable (2 ft, 60 cm)	18 AWG, 0.82 mm ² chloroprene rubber

Face view (male)

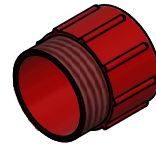
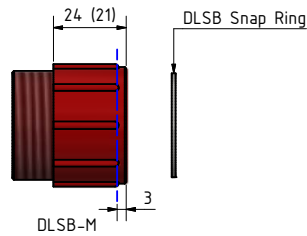
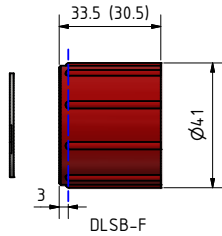
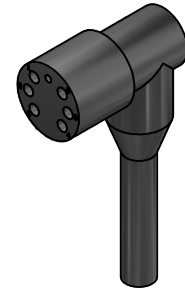
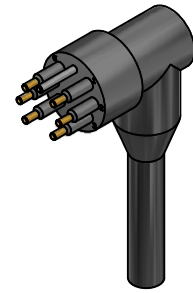
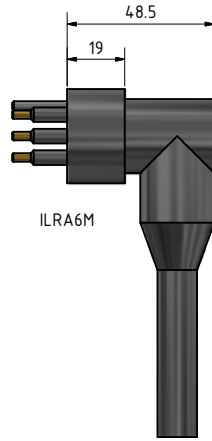
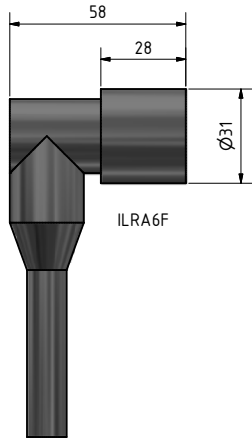


Inline cable colour code

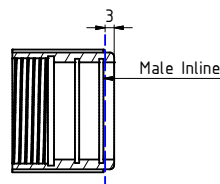
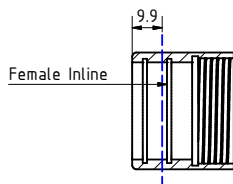
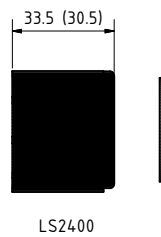
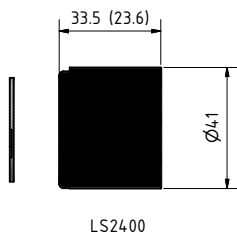
1 Black	3 Red	5 Orange	7 White/black	9 Green/black
2 White	4 Green	6 Blue	8 Red/black	10 Orange/black

Nominal cable outside diameter (OD)

6 conductor cable 0.520", 13.2 mm
8 conductor cable 0.555", 14.1 mm
10 conductor cable 0.605", 15.4 mm



Note:
Locking Sleeve has
to be modified to 30.5/21
to fit this RA connector



Note:
When used with Metal Shell
2400 Locking Sleeve has
to be modified to 23.6/30.5
to fit this RA connector

Drawing information

Dimensions in mm (1 mm = 0.03937 inch)
Threads in inches (1 inch = 25.4 mm)