

# SubConn® Circular

## Mini 1 contact

### Connector specifications

Voltage rating	600 V DC/AC rms
Current rating	10 A
Insulation resistance	> 200 Mohm
Contact resistance	< 0.01 ohm
Wet matings	> 500
Temperature rating (water)	- 4 to 60°C, 25 to 140°F
Temperature rating (air)	- 40 to 60°C, - 40 to 140°F
Storage temperature rating	- 40 to 60°C, - 40 to 140°F
Design depth rating	1,400 bar, 20,000 psi
Qualified pressure tested	800 bar, 11,600 psi

### Material specifications

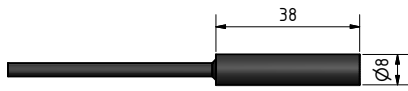
Connector body	Chloroprene rubber
Contacts	Gold plated brass UNS - C36000
Locking sleeves	POM
Inline cable (2 ft, 60 cm)	18 AWG, 0.82 mm <sup>2</sup> chloroprene rubber

### Inline cable colour code

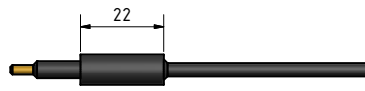
1 Black

### Nominal cable outside diameter (OD)

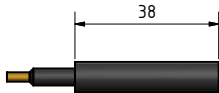
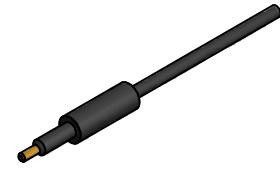
Chloroprene rubber cable 0.142", 3.6 mm



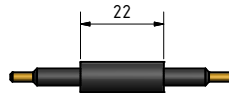
ILM1F



ILM1M



OMM1F



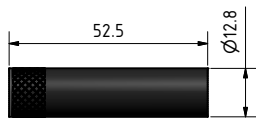
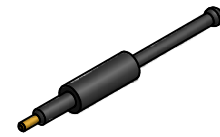
OMM1M



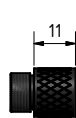
DCM1F



DCM1M



DLSM1-F



DLSM1-M



### Drawing information

Dimensions in mm (1 mm = 0.03937 inch)  
Threads in inches (1 inch = 25.4 mm)